



The BRL Group

Water, Environment & Development

Comprehensive expertise to champion your local challenges

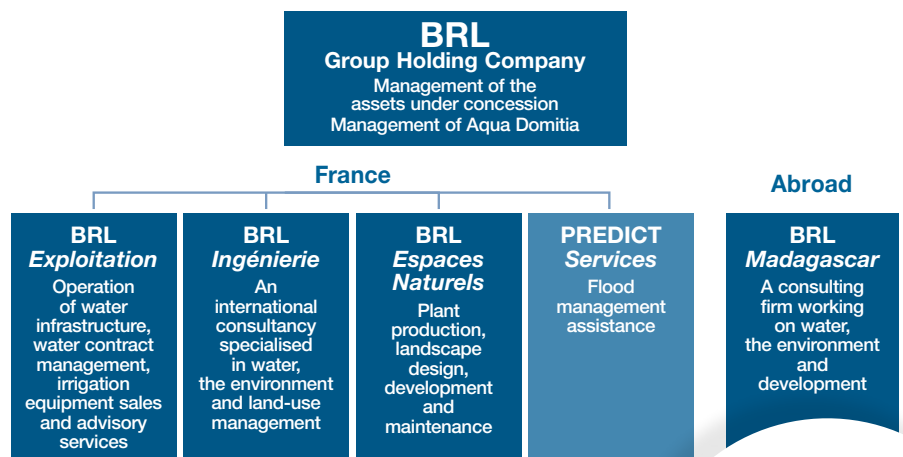
- 700 employees, in France and abroad
- Annual turnover more than €70 million
- A Group of companies addressing major water-related challenges in France and all over the world
- Specialists capable of taking up the challenges of the 21st century (climate change, the depletion of natural resources, ecological, energy and digital transition, etc.)
- Six companies dedicated to local areas and the world they live in
- France National Prize for Engineering (The Couesnon Dam, Mont St Michel), French Prize for Ecological Engineering (Prado artificial reefs in Marseille), Victoires du paysage (ZAC Marianne estate, Montpellier)

Solving **water and environmental issues** or land-use management problems is not just a matter of technical skills. Capable of managing the most complex projects, the **BRL Group** has a **wide range of economic, social, environmental and institutional expertise** and the threefold credentials of a **designer, developer and manager**.

For 60 years now, **BRL** has been working alongside the local stakeholders to **develop Languedoc-Roussillon**. The large pressure network for raw water, designed and managed by BRL under a concession agreement, has helped make the region attractive and facilitated its development. In 2008, the **water system** belongs to the **Languedoc-Roussillon Regional Council**. Under the **Aqua Domitia** programme, to withstand pressure due to a regional population increase and to climate change, the network will be extended to **secure water supplies in certain local areas and to protect water-related habitat**.

In **France and abroad**, the **BRL Group** is now involved in some of the most **ambitious projects ever**: restoring the maritime aspect of **Mont Saint Michel**, integrated management of **shared transboundary rivers, flood protection**, creation and protection of natural parks (marine parks and large reserves in Central Africa...) and **coastal zones** (Prado artificial reefs in Marseille), climate change adaptation and secured water supplies and the development of more sustainable **irrigated agriculture**, etc.

As a member of the SWELIA network's and the World Water Competitiveness Cluster, our know-how and sense of innovation now focus on the major challenges of **climate change, preventing the depletion of natural resources and biodiversity conservation**.



Contact:

Phone: 00 33 (0)4 66 87 50 00

Fax: 00 33 (0)4 66 84 25 63

E-mail: brl@brl.fr

Website: www.brl.fr





Skills & activities

Managing and developing major water works concession contracts



Parent company **BRL** manages the assets entrusted to it by the **Regional Council**. They are estimated to be worth some 2 billion Euro.

It develops demanding maintenance policy for all the water works involved. It manages regional water system extension projects such as the Languedoc-Roussillon **Regional Council** programme, **Aqua Domitia**, to secure water availability in a vast area between Montpellier and the south of the Aude department.

BRL is also the group's holding company. This means a full array of support services: finance, legal issues and risk management, human resources, computing and office automation, communication, etc.

Producing and supplying water and promoting water-saving irrigation

BRL Exploitation operates 13 dams and reservoirs, 6 small hydroelectric power plants, 106 km of canals, 5000 km of buried pipes, 125 pumping stations and 6 drinking water treatment plants in Languedoc-Roussillon. Thanks to these facilities, **BRLE** distributes some 120 million m³ of water (mainly untreated, pressurized water supplies). These renewable water resources (derived from the Rhône or from dams) meet the needs of over a million people in summer, close to 5000 farmers (half of the total irrigated area in the region), 6000 private consumers and 150 businesses.



Outside Languedoc-Roussillon, **BRLE** also operates 7 dams and reservoirs which **Villerest dam** (on the Loire), **Lavalette Dam (St Etienne)** and **La Caserne Dam (Mont Saint Michel, with Veolia)** and exports its skills for the benefit of other countries.

BRL Exploitation offers expertise (advice, studies, irrigation equipment sales) on water savings in irrigation so that crops and gardens use less water.

Engineering and consultancy on water, the environment and development

BRL Ingénierie works for public and private stakeholders in France and abroad.

Specialising in water, the environment and land-use management, **BRLI** performs consulting assignments, studies and design and construction engineering services.

Their experts are dedicated to the major challenges of the 21st century: **better access to water for everyone**, anticipating and adjusting to **climate change**, **biodiversity conservation**, **safeguarding natural resources** and **preventing risks of food shortages, flooding or soil impoverishment...**

BRLI's expertise can be grouped into the following core areas of activity: Drinking supply & Sanitation, hydraulic infrastructure and water transfers. Water, agriculture



& food security, Water & natural risks management, Integrated water resources management, Sea & coastal zone, Navigation & ports, Environmental & social assessment, Biodiversity management & sustainable development and Regional development.

BRL Madagascar is an overseas consulting firm and a subsidiary company belonging to **BRL**. They work independently or with **BRLI** on the previous subjects.

Prédicit Services, is a company developed by **BRL** in association with **Météo France** and **EADS Astrium**. It helps local communities anticipate floods and manage emergencies.

Plant production, and landscape improvement and maintenance



BRL Espaces Naturels is the **BRL Group's** «green fingers» subsidiary.

BRLEN offers clients a full range of services to create, develop and maintain parks and gardens to enhance the immediate environment and solve even the most complicated problems (like moving and trimming large trees, getting rid of green waste, etc.).

It has two plant nurseries, **Les Pépinières BRL**, selling a wide range of ornamental and Mediterranean plants, all environmentally grown. The plants they produce have the «**Sud de France**» label.

